

Carmel Middle School Music Department
 300 South Guilford,
 Carmel, IN 46032

Dear Eighth Grade Band, Orchestra and Choir Parents and Students:

It has become a tradition over the past several years for our student groups to participate in a spring music festival. This year's trip is being planned for St. Louis, MO on May 4th and 5th, 2018 and includes:

- Transportation in charter buses
- Lunch and a trip to the St. Louis Zoo
- A critiqued performance before a panel of judges in a music festival
- Dinner and Game Card for the St. Louis Incredible Pizza Company
- Overnight hotel accommodations at the Renaissance Hotel and overnight security
- Four meals (Friday lunch and dinner, Saturday breakfast and dinner)
- Saturday admission to Six Flags St. Louis amusement park

The cost of the trip is \$330 for students and parent chaperones.

WorldStrides will serve as our travel agent this year. They offer optional travel insurance, and if you are interested please contact your child's director. All payments will be handled by WorldStrides and you will have multiple payment options. The payment schedule is show below. Please note the profits your student may have earned from the Butter Braid fundraiser will be applied to the **December payment**. *We do not wish for finances to prevent any child from participation. Please contact your student's director if you need assistance in this area by Nov. 17th.*

To participate you **MUST register your student online (see attached information) and submit your ~~\$88.00~~ \$68 deposit by November 28th to Music America.** The payment schedule will then continue as outlined below.

Payment Plan	Due Date	Amount
Deposit	November 28, 2017	\$68.00
First Payment	December 20, 2017	\$68.00
Second Payment	January 20, 2018	\$68.00
Third Payment	February 20, 2018	\$68.00
Final Payment	March 20, 2018	\$68.00

Because the students are participating in a music competition, we must have a strong representation of all performing groups (approximately 90% or better). If we are unable to reach this goal, your deposits will be fully refunded.

We hope that ALL of our students will be able to attend! We will need approximately 23 parent chaperones (both male and female) to accompany us. If you are interested, please indicate that on the attached page by Friday, November 17th. Your student's director will contact you by **Thursday, November 30** to let you know if we need you to you chaperone. **Your student will also need to purchase a trip T-shirt for Saturday** (we all wear the same shirt at the park so that we can easily spot our Carmel Middle School students). Please return the enclosed order form and cash or check for \$10 paid to the Carmel Middle School FAM club. *Shirt orders are due by Nov. 17th.*

Sincerely,

Chris Drabyn

Becky McElhannon

Joel Powell

Trisha Scheidies



Carmel Middle School Music Department
300 South Guilford,
Carmel, IN 46032

8th Grade Trip T-shirt Order Form

All students attending the 8th grade trip to Chicago will need to purchase a specifically-designed t-shirt to wear at the Six Flags park. This helps our directors, chaperones and park employees easily find our Carmel Middle School students.

The cost of the shirt is \$10. All checks should be made payable to Carmel Middle School FAM Club.

Please fill out the order form below and include it with your child's payment in an envelope with the student's name on the front. Please return it to your child's director by Friday, November 17th.

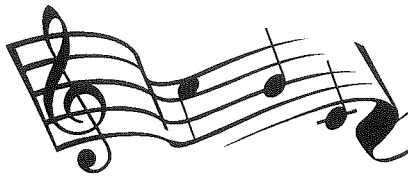


Student Name _____

Class (circle your class name): CHOIR BAND ORCHESTRA

Size: (please circle the size of your choice)

YL YXL AS AM AL AXL



Carmel Middle School Music Department
 300 South Guilford,
 Carmel, IN 46032

CHAPERONE INTEREST FORM

Thank you for your interest in being a chaperone on the 2018 Performing Arts Trip. During this trip your duties will include the following:

- Assisting the directors and students with the loading and unloading of the buses
- Assisting students if any issues arise and bringing it to the attention of the directors
- Responsible for checking in 8-10 students on Friday at bed time, at the St. Louis Zoo, and at Six Flags
- Checking in at the First Aide Station at Six Flags on Saturday (this is a shared duty among all chaperones)
- Responsible for making sure students attend breakfast Saturday morning and that they have turned in their room keys upon our departure
- Assisting with crowd control ☺ at the performance site, dinner and at any other time during the trip
- Responsible for administering/monitoring medication during the trip (TRIP NURSES ONLY)

If you are still interested in volunteering ☺, please fill out the portion below and return it to your child's director by November 17, 2017. As much as we would like to take everyone, the number of chaperones we take will be based on the number of students that attend. Your student's director will contact you by **Thursday, November 30** to let you know if we need you to you chaperone. Thank you again!

Sincerely,

Chris Drabyn

Becky McElhannon

Joel Powell

Trisha Scheidies

Chaperone Name _____ T-shirt Size (circle one): AS AM AL AXL A2XL

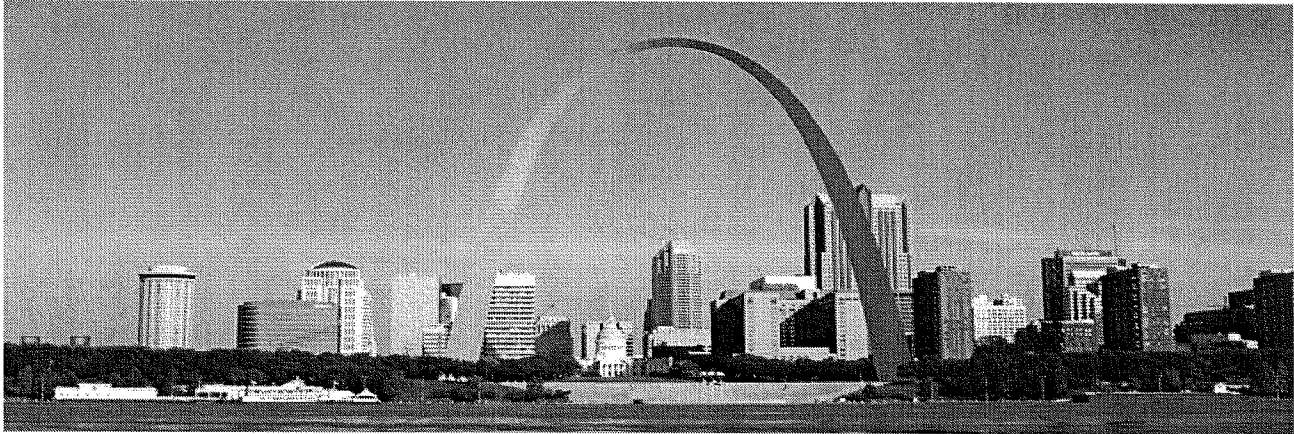
Cell Phone Number: _____ Email Address: _____

[] **YES!** I am interested in chaperoning the Performing Arts Trip on May 4-5 ☺

[] **YES! I am also a registered nurse and would be willing to serve as the trip nurse on the trip.**

[] **YES!** I have a criminal history background check on file. (Required by CCS)

Performing Travel Experience Designed Especially for Carmel Middle School



St. Louis - 157710

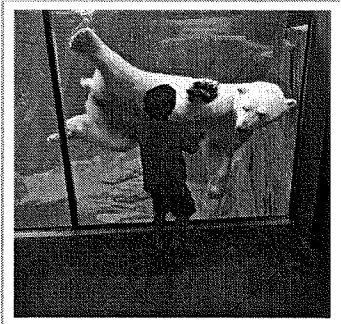
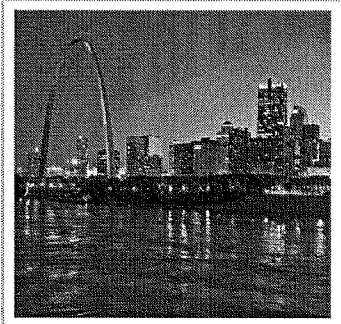
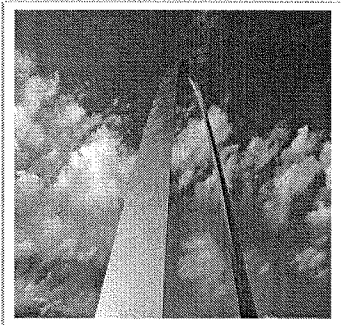
May 4 - May 5, 2018

ITINERARY OVERVIEW

- DAY 1 DEPART CARMEL (BUS) - ARRIVE ST. LOUIS (1 NIGHT) - MUSIC IN
THE PARKS FESTIVAL
- DAY 2 SIX FLAGS - DEPART ST. LOUIS - ARRIVE CARMEL

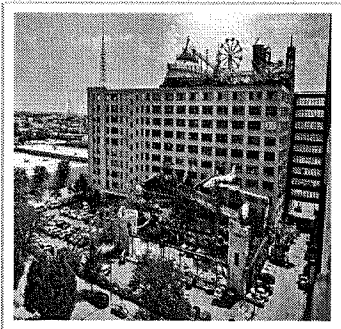
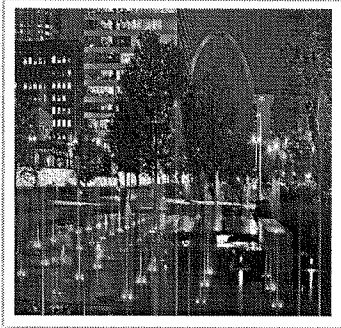
ITINERARY

Educational Tour/Visit	Cultural Experience	Festival/Performance/Workshop	Tour Services
Recreational Activity	LEAP Enrichment	Match/Training Session	



DAY 1 Friday, 04 May 2018

- The charter coaches arrive for loading at Carmel Middle School.
 - You will have use of five private coaches and drivers, while touring for the next two days.
 - Depart for St. Louis. The estimated drive time is 4 1/2 hours and 266 miles, including one rest stop. Lose one hour to Central Time.
 - St. Louis, Missouri, is the second largest city in the state, and is known for the city's towering St. Louis Arch landmark. The city was founded by Pierre Laclède and Auguste Chouteau and named after Louis IX of France, and has been largely supported by the manufacturing industry. St. Louis has two major sports teams, the St. Louis Cardinals in the MLB, and the St. Louis Blues in the NHL.
 - Your 24-hour Two Tour Directors will meet you upon arrival and remain with you until your final departure.
 - Visit the St. Louis Zoo which is known as being a leading zoo in animal research, conservation and education. Explore the many areas of the zoo such as the River's Edge, Discovery Corner, Historic Hill and Red Rocks and see an incredible variety of animals, reptiles, insects and so forth.
 - The group will be given a \$10 cash allotment for lunch at the zoo.
 - Depart for dinner.
 - This evening, dinner will be at St. Louis' Incredible Pizza Company. A buffet dinner and card game are included.
 - Depart for your hotel to check in.
 - Depart for the Music in the Parks location.
 - The Carmel Middle School Music Department will give performances in the Music in the Parks Festival.
 - Return to your hotel.
 - Your base for the next evening will be the St. Louis area. While here, enjoy breakfast at the hotel.
- Renaissance Hotel
9801 Natural Bridge Rd.
St. Louis, MO 63134
Phone: (314) 429-1100
- There will be two private security guards on duty at the hotel.



DAY 2 Saturday, 05 May 2018

- ☉ This morning you will enjoy breakfast at the hotel.
- ☉ Load the charter motor coaches and check out of the hotel.
- ☉ Depart for the day.
- ☉ Six Flags amusement park has something for everyone. Spend the day on roller coasters or try the St. Louis park's new virtual ride!
- ☉ Lunch will be by the group's own arrangement and cost.
- ☉ Enjoy a dinner buffet inside the park.
- ☉ Meet your coaches and depart for home. The estimated drive time is 5 1/2 hours and 300 miles, which includes one rest stop. Gain an hour back.
- ☉ Arrive at Carmel Middle School.

TOTAL PER PERSON TOUR COST BASED ON NUMBER OF FULL-PAYING PARTICIPANTS

Carmel Middle School	Full Paying Participants	Price In USD
This proposal is valid until Thursday, 07 December 2017	245	330
How to Enroll		
<p>The Trip ID for your program is 157173 and you can register today by credit card or echeck by going to: www.worldstridesdiscovery.org/register A \$68 initial deposit is due by 11/28/2017.</p> <p>Please contact your Program Leader for further information.</p> <p>Program Leader: Trisha Scheidies Contact Details: tscheid@ccs.k12.in.us</p>		

What is Included:

- Transportation by chartered motor coach per the itinerary
- Two full-time WorldStrides Tour Directors to accompany your group 24 hours a day from arrival to departure
- Accommodation in quad rooms (with occasional triples) for all students
- Two private security guards at the hotel
- 1 Breakfast, 1 Lunch, and 2 Dinners while on tour
- All excursions, cultural activities, and pre-booked admissions as per your itinerary
- All performance arrangements
- 18 adults will be permitted double occupancy rooms paying the quad price of \$330
- Gratuities for the drivers and WorldStrides Tour Directors
- All participants are provided accident, illness, and accident-related dental insurance coverage (underwritten by American Income Life) up to \$7,500 for accident, \$1,500 for illness, and \$750 for accident-related dental

This Does Not Include:

- Any meals indicated on the itinerary as "at your expense"
- Double occupancy upgrade at \$35
- Single occupancy upgrade at \$110
- Any costs for the transportation of equipment/instruments by land
- Optional supplemental travel insurance - A Trip Mate insurance policy is highly recommended for all trip participants. This comprehensive policy includes health, property, and standard cancellation coverage at a cost of \$69 per person.
- Alternatively, an enhanced Cancel for Any Reason Insurance policy is available through Trip Mate for \$99 per person